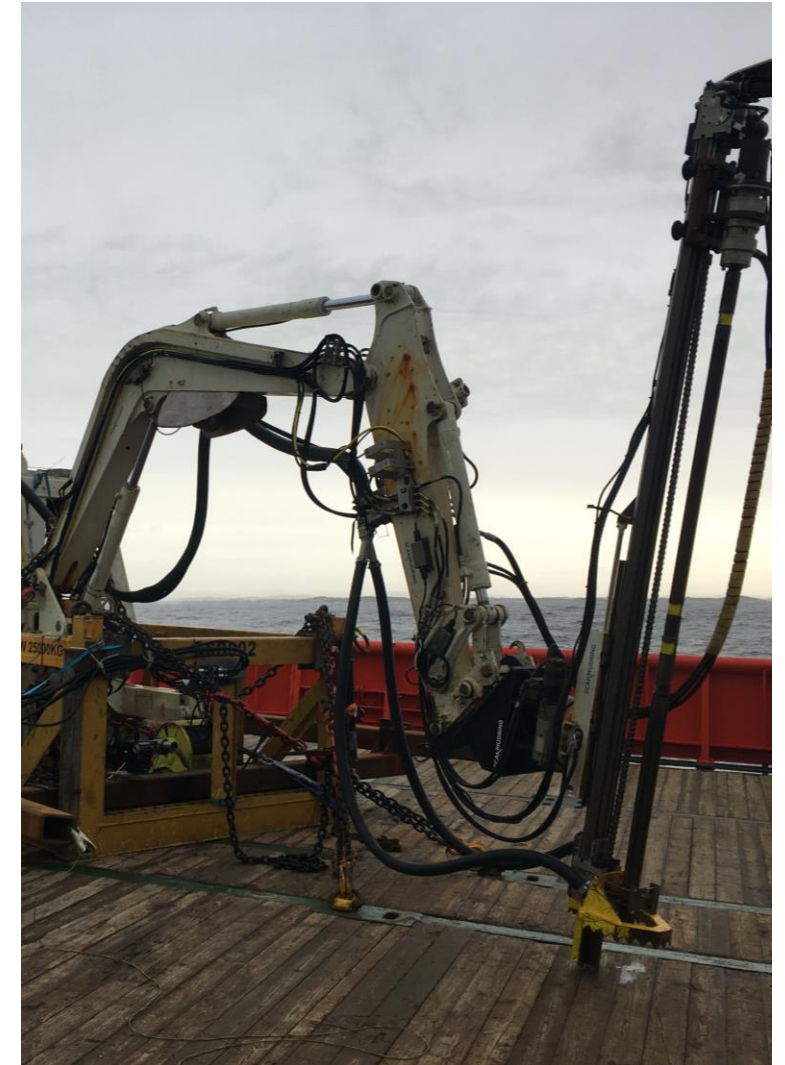


# Scanmudring Deepwater drill rigs

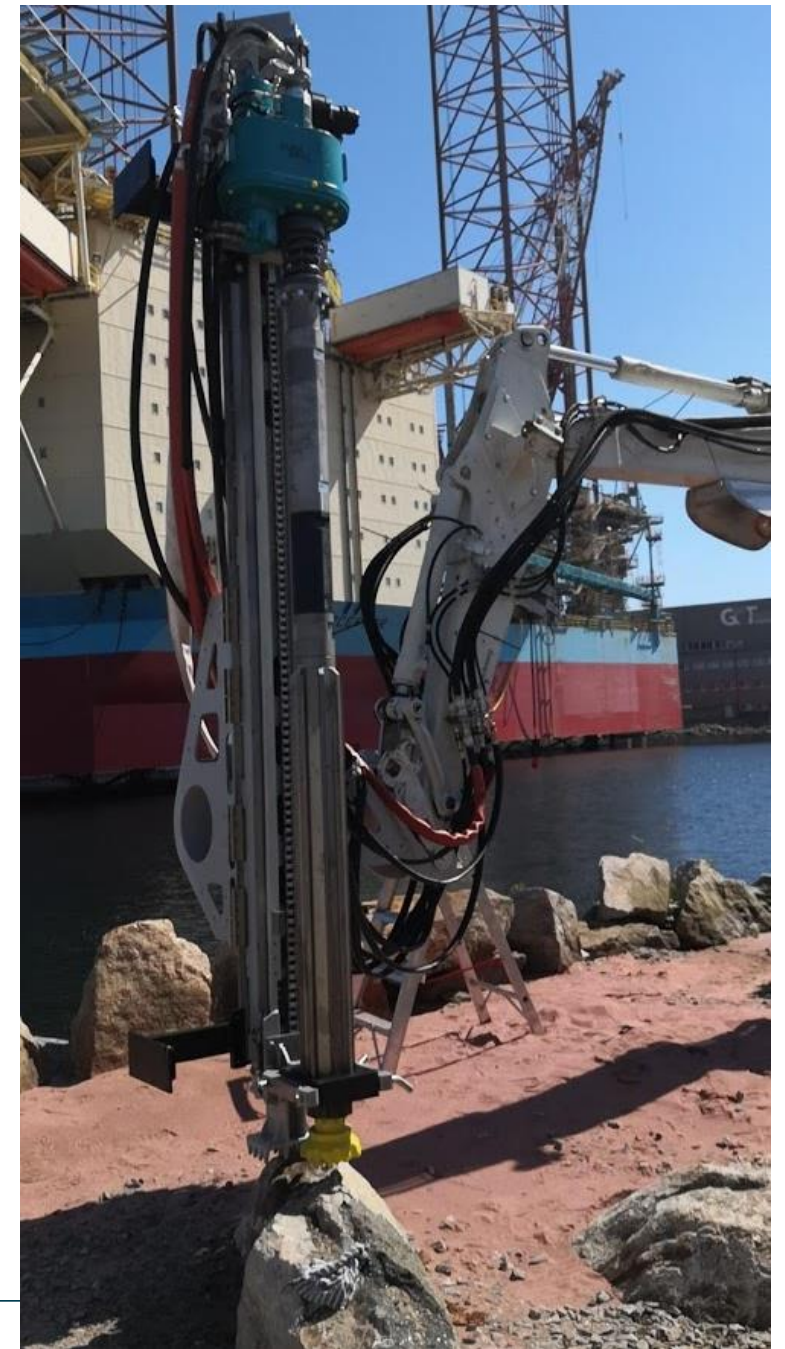
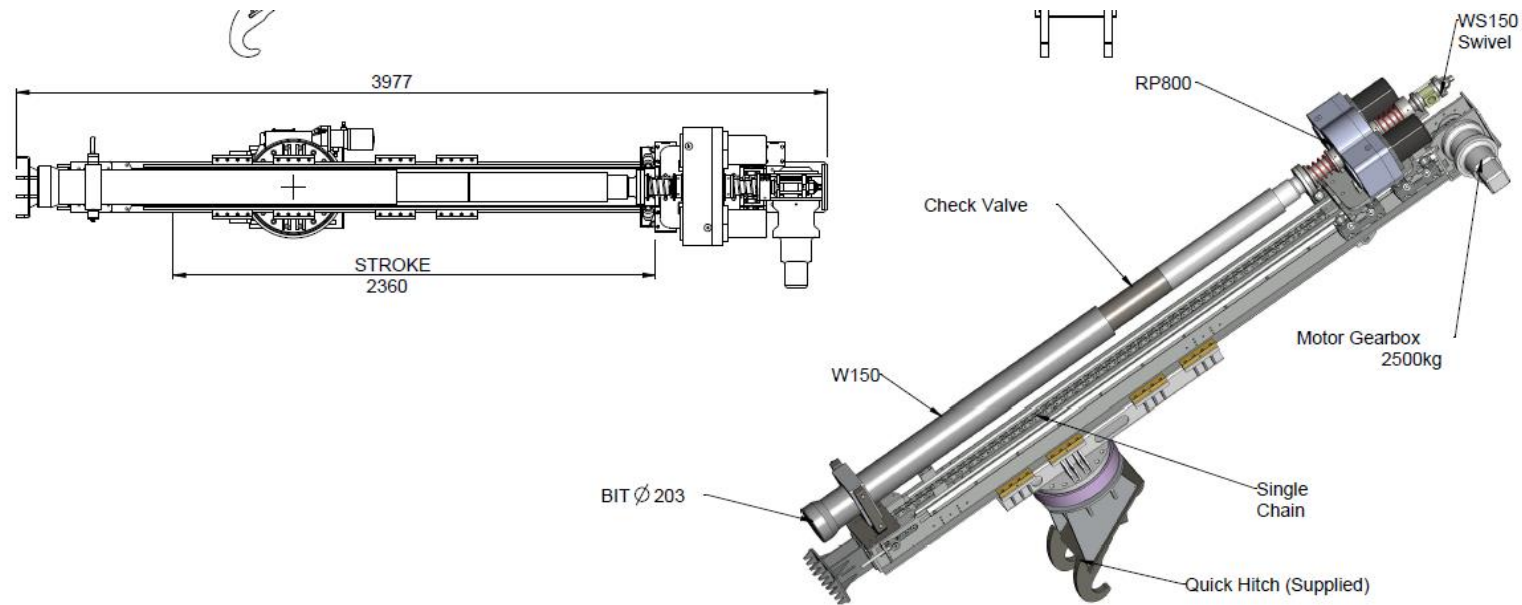
## Bedrock anchor point, bedrock removal, casing and core sampling

- Scanmudring have drilled a significant number of 3m x 89mm holes at 100 – 600m water depths.
- Hole drilling requires HP water, could be fitted on Scanmachine or supplied from top side
- Benefits entering on uneven surface, as the only thing “hammering” is the drill bit. The water-powered hammer is capable of penetrating almost any formation while maintaining speed and accuracy
- Capable to access all surface with 360deg free rotating and 0 – 90 deg tilt.
- Built-in suction of drill cuttings.
- The rigs can handle diameters from 60 – 203mm (larger dimension requires modification to the rig)
  - Diameter up to 324mm is available with 40Te Scanmachine
- 89mm is optimized for the ScanRock-splitter
- Possible to drill with casing that will remain in the hole once the hammer is retrieved.
- Hole drilling speed is highly depending on the access to the drilling location but with easy access it is in the range of 2-10min/meter.



# Scanmudring Deepwater drill rigs

Testing in Mandal prior to drilling anchoring points for fish farm



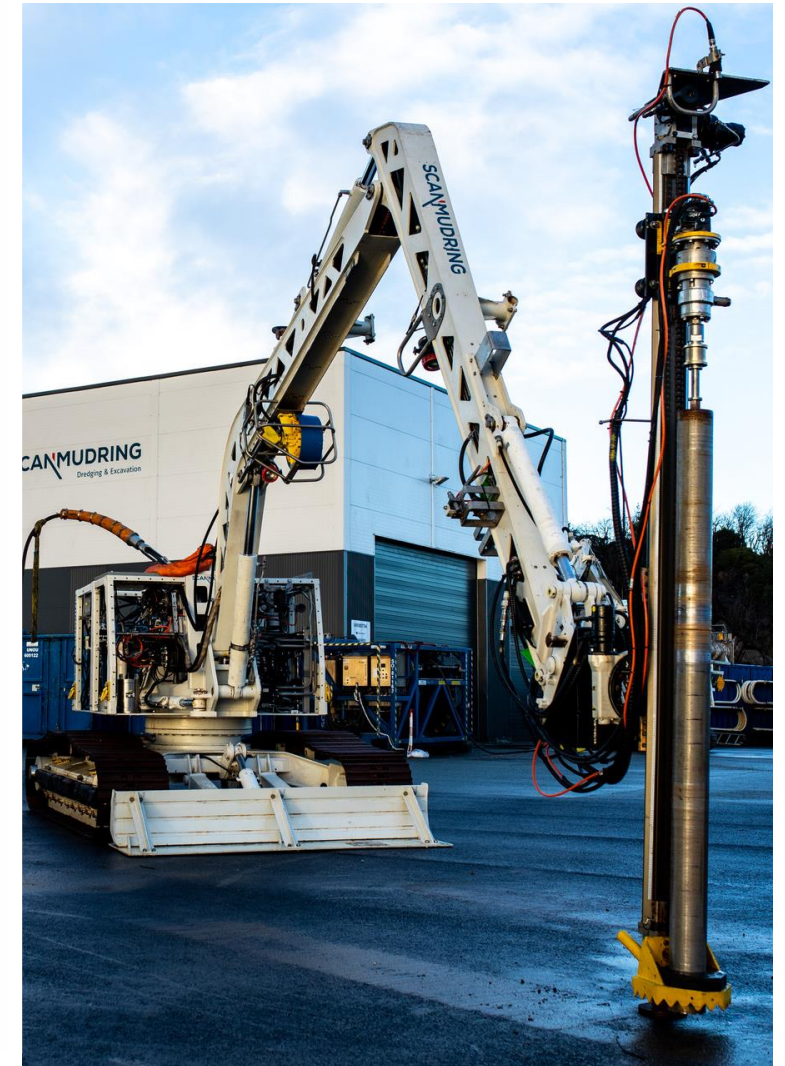
# Scanmudring drill rigs

## Coredrill

- Core drilling available in various sizes normally ranging from 23 – 250mm (barrel is project specific, for dimension, depth and material to be cored).
  - Have experience in coring in all type of material and combination of material: Steel, concrete, rubber, bedrock.
  - Coring speed is highly depending on material but in bedrock typical between 1,5-3hrs for a 3m core.



Tyrolit



Coredrill