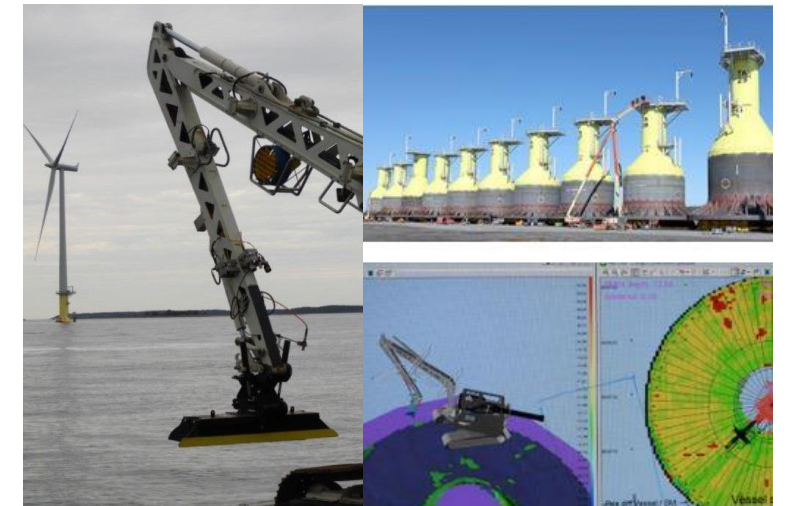


Fully/semi - automated operations

Program project specific operations or sequence

- In scopes where repeated sequence are beneficial or where extreme coordination between several functions is required, it is possible to apply automated functions that will assure increased efficiency and quality
- Examples of operations where semi/fully automated sequences are beneficial:
 - High precision levelling
 - Levelling over large areas
 - Cutter drum operations, especially where there are large volumes
 - Tracing in one specific heading
 - Grab operations
- With the semi automatic functions it is possible to make several functions follow one manual controlled function.
 - One example is levelling where the operator control the dipper movement and speed while the boom and bucket tilt function automatically compensate to assure the target depth is maintained during the movement



'Example: Levelling of GBS foundation with 20Te Scanmachine